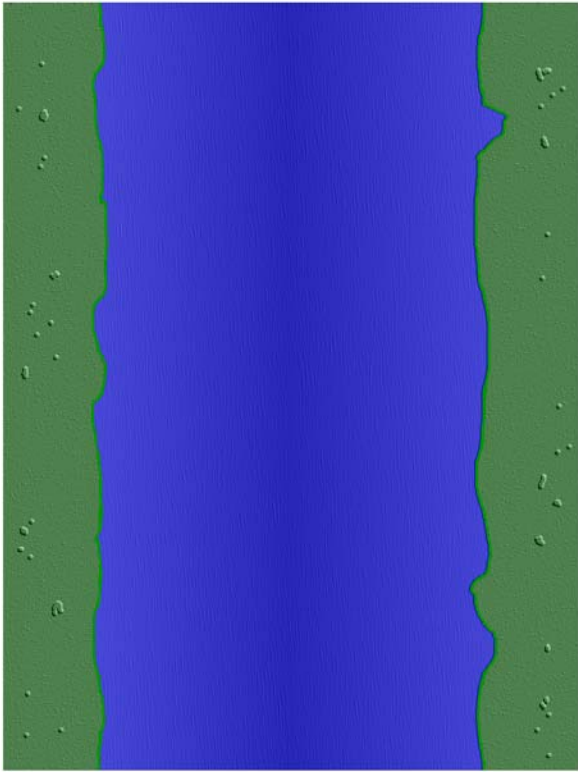
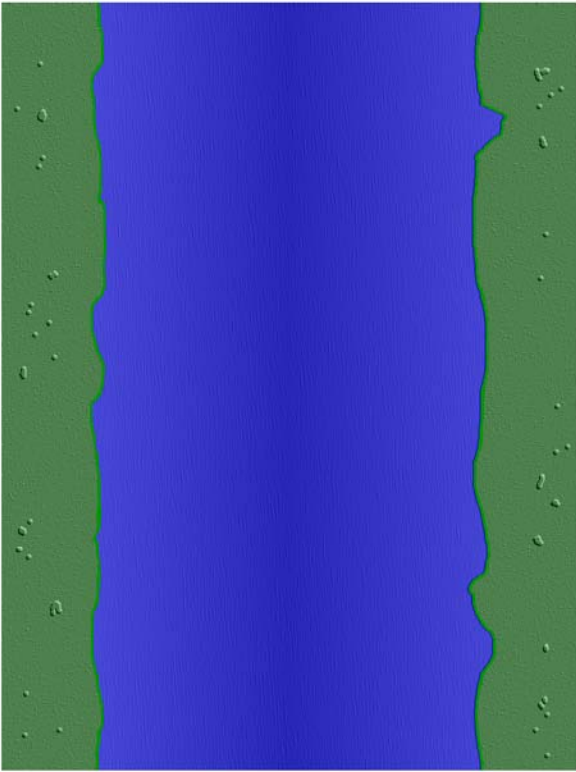
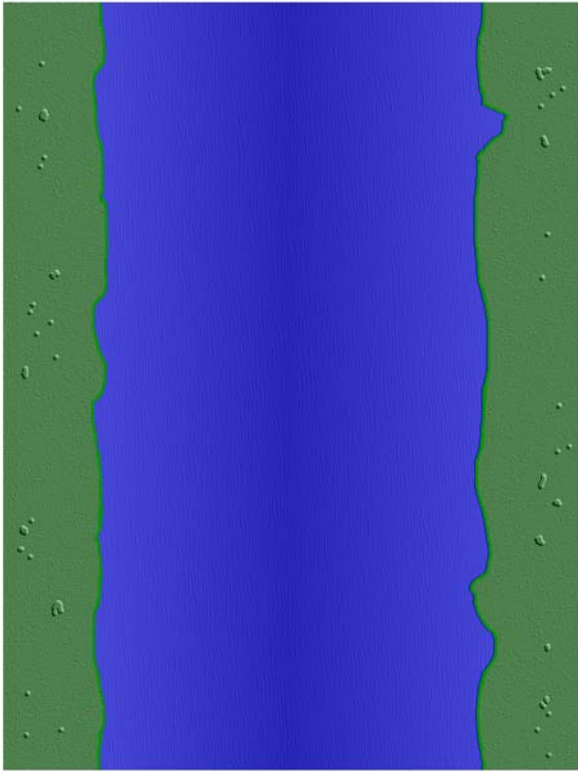
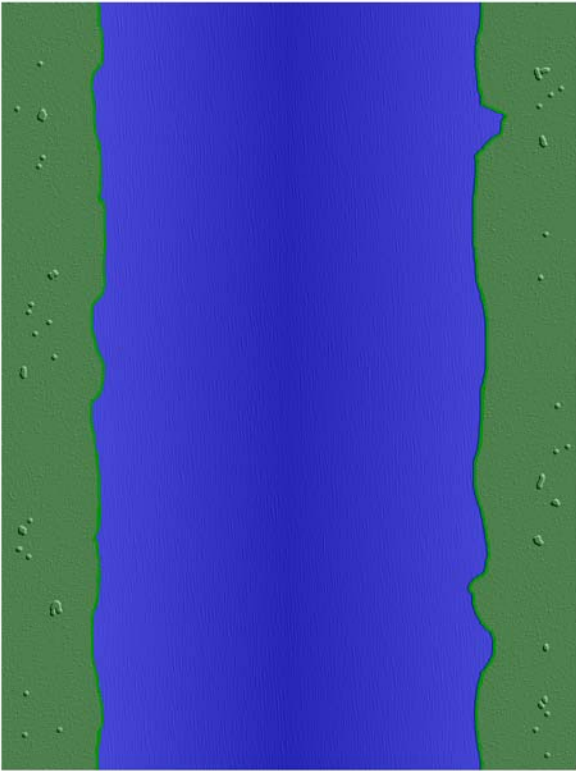
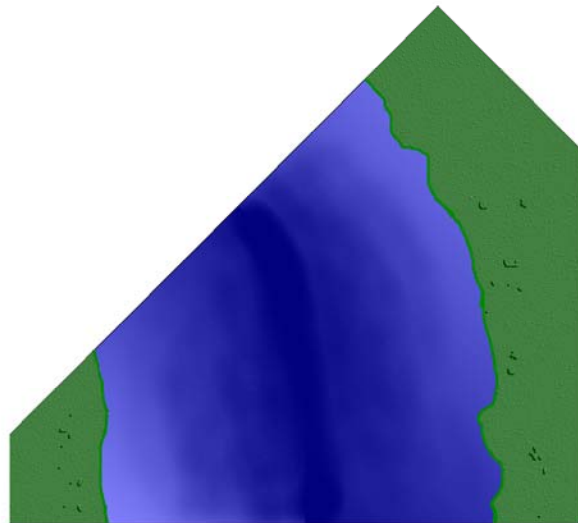
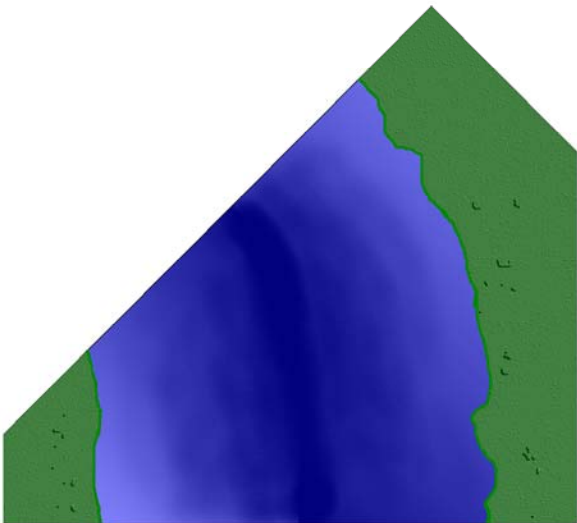
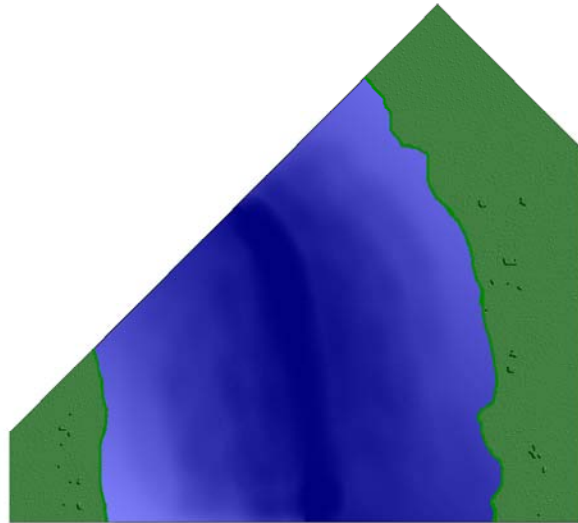
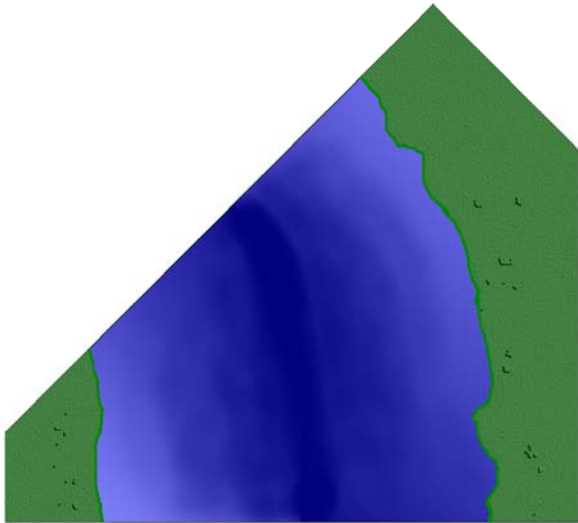
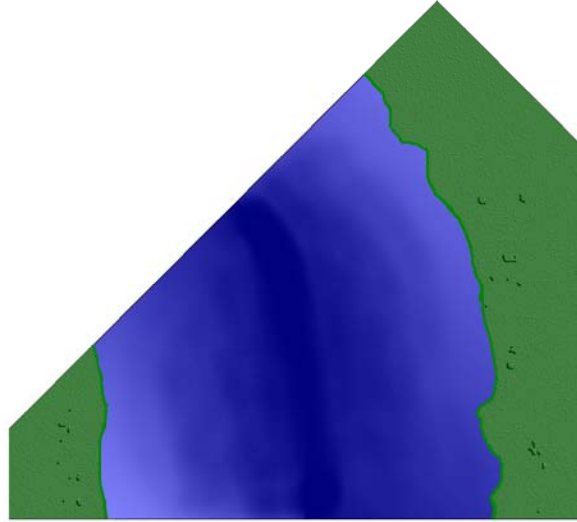
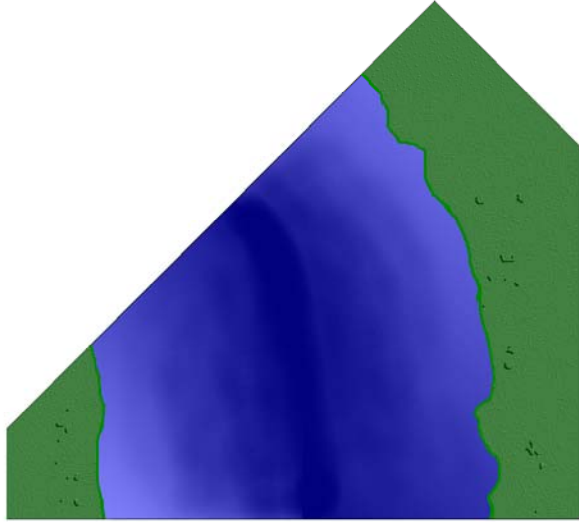


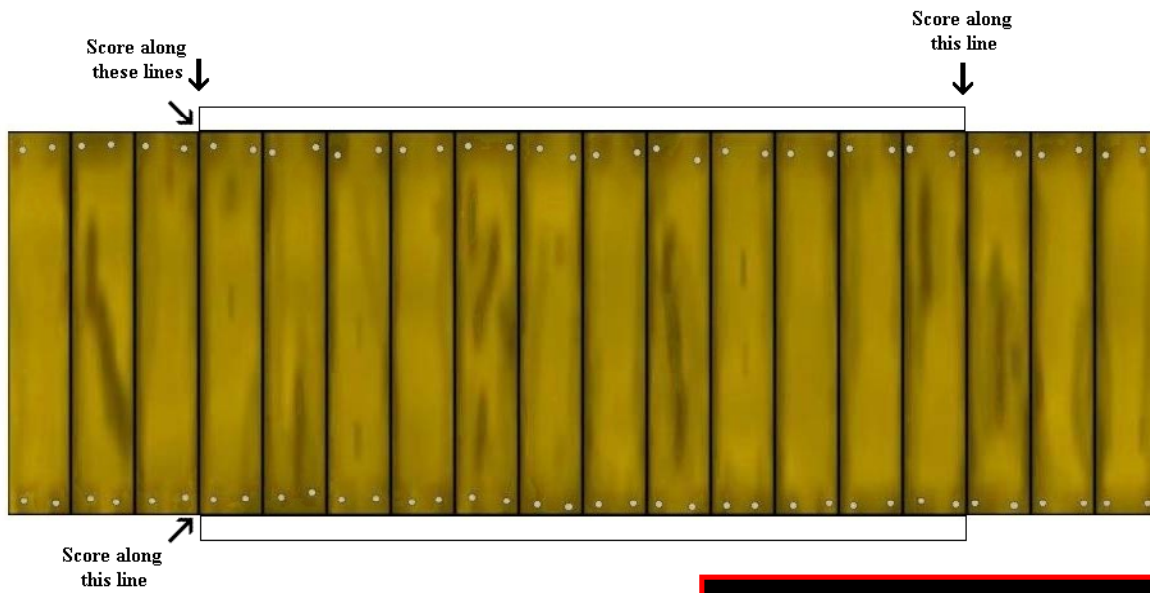
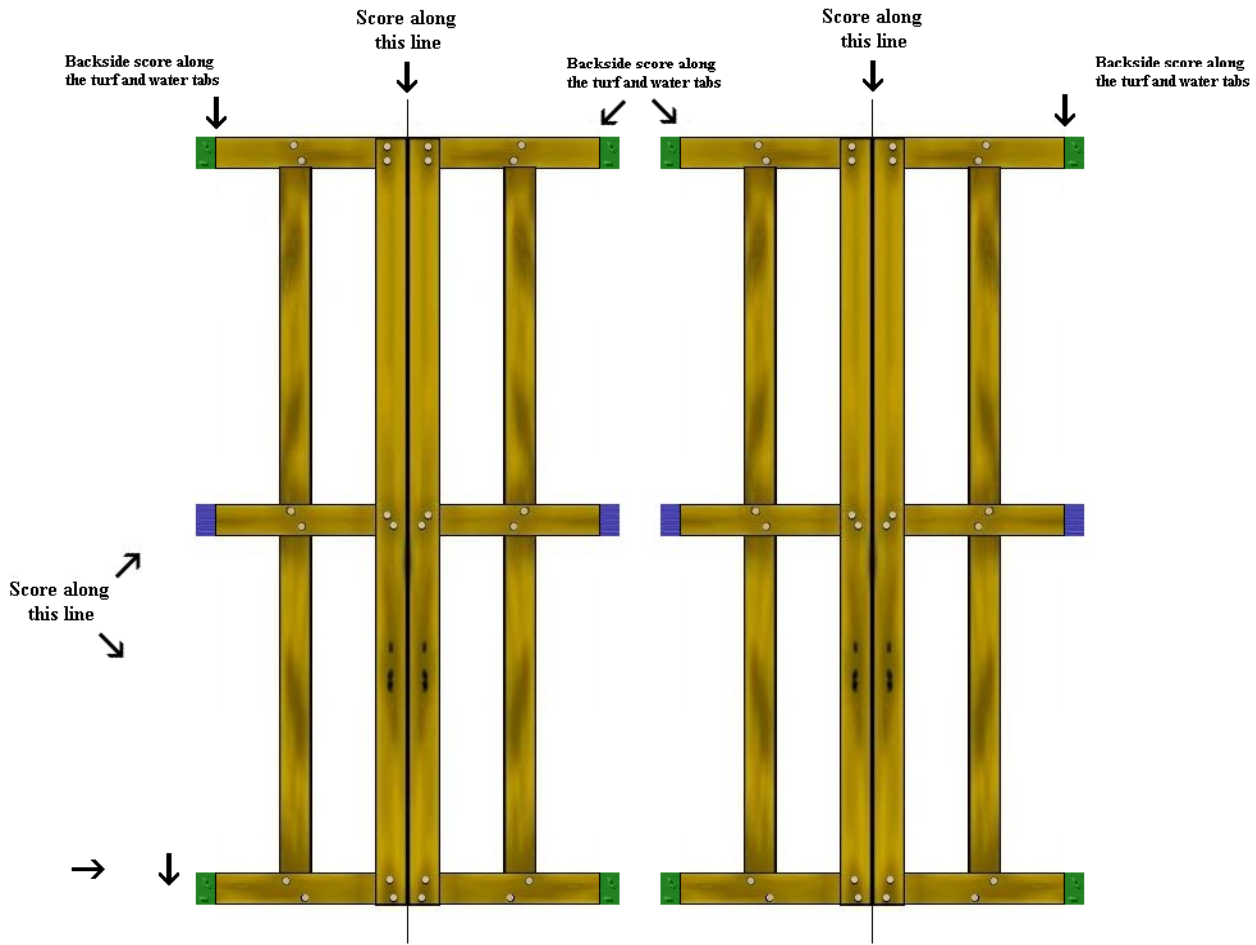
Straight River Sections



Winding River Sections



WOODEN BRIDGE



WOODEN BRIDGE

by Bobby R. Wallen Jr.

Construction Instructions

Cut out both rail sections and the floor section of the bridge, leave plenty of blank paper around each.

Score across the the bridge where the tabs connect to the bridge, between the third and fourth planks when counting from each end. The score along each tab on either side of the bridge flooring. Also score down the center of each rail. Then do a backside score along each turf and water tab at the end of rail leg.

Fold over both rails along the center score and put glue inside. DO NOT get glue on the turf and water tabs. DO NOT cut out the white inside the railing. Let the glue completely cure, then cut away all white on the rails.

Use a black felt tipped marker to color the white scored and cut edges of the bridge rails and flooring. Use a green and blue felt tipped marker to color the white exposed edge of the turf and water tabs respectively.

Fold down the tabs on the side of the bridge flooring, apply glue to the outside of the tabs and afix to the bottom rail of each rail section, let it cure completely.

Fold the turf and water tabs up and apply glue to the bottoms of the tabs. Afix the bridge to a straight river section.

Fold down either end of the bridge to make a ramp up onto the bridge. If you wish apply a small amount of glue to the bridge ends where they contact the straight river section.

